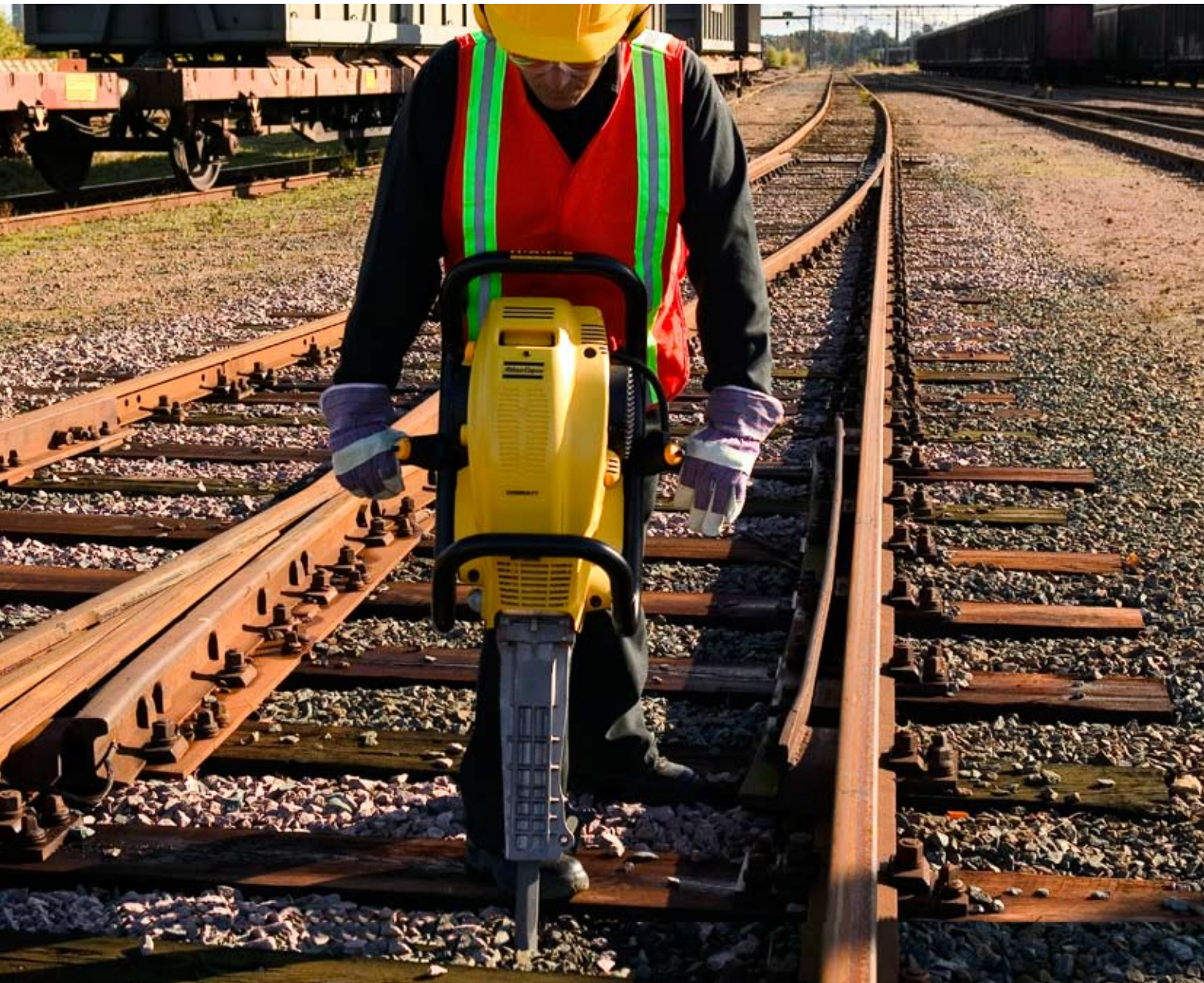


Cobra TT

The low vibration petrol-driven tie tamper



Atlas Copco

The low vibration petrol-driven tie tamper

Low vibration level

The first time you use a Cobra TT, you'll be surprised by the low vibration levels. This is due to a unique, patented vibro-dampening system that consists of leaf springs instead of the usual rubber bushings or spiral springs.

High blow frequency

The Cobra TT is a highly productive tool. It has been specially designed for tie tamping and works at the relatively high frequency of 1,620 blows/min. The impact energy of the Cobra TT has also been optimized to help prevent pulverization of the ballast.

Fast in, fast out

With no compressors, hoses or cables to set up, a petrol-driven breaker is ideal for tie tamping. Weighing just 25 kg, it can be carried on and off the track quickly and easily by an individual operator. This portability makes the Cobra TT perfect for fast interventions without the need to close the track.

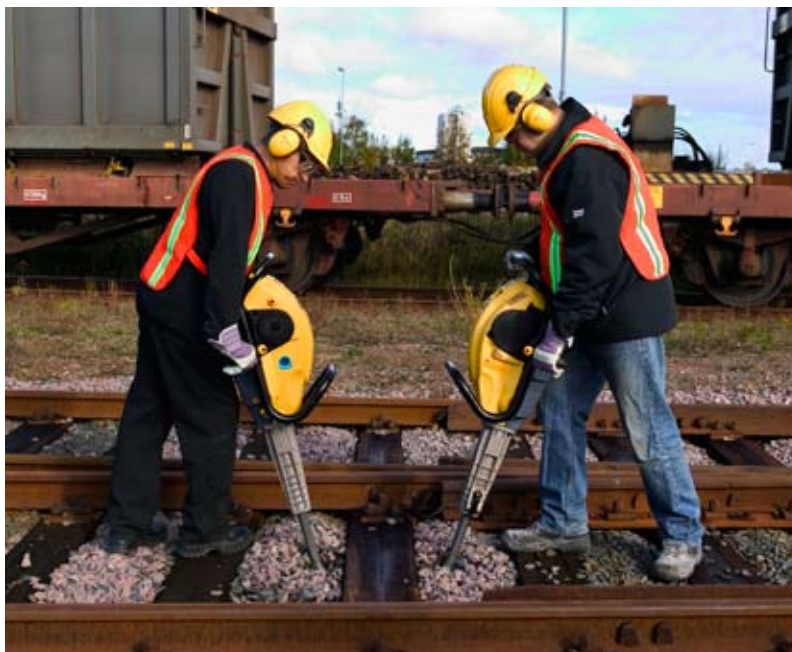
A multi-purpose tool

In addition to tie tamping, the Cobra TT can be used for all kinds of maintenance work on tracks, crossings, access roads and railway stations –

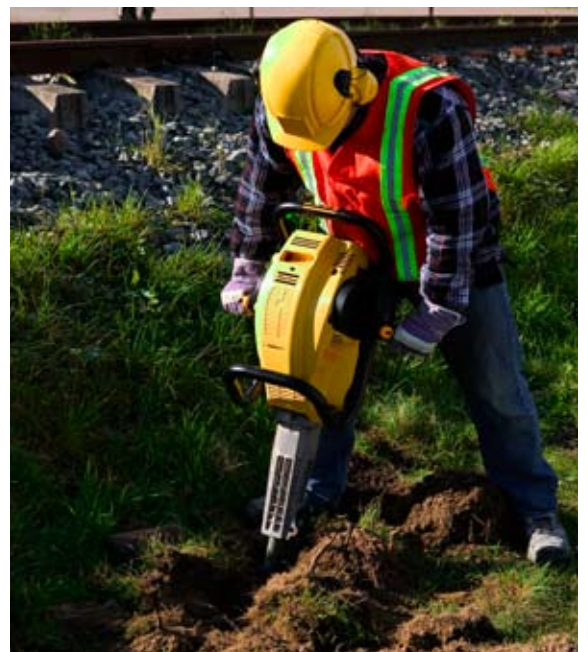
- Spiking wooden sleepers
- Digging cable trenches
- Breaking concrete
- Cutting and compacting asphalt
- Driving posts and fencing



Tie tamping



Tie tamping



Digging



Easy to start

With a decompression valve and electronic ignition, the Cobra TT is easy to start in all weathers.



Hand and arm protection

Atlas Copco's unique Hand and Arm Protection System (HAPS) reduces the negative effects of harmful vibrations.



AWD – Audio Warning Device

Cobra TT AWD is compatible with the AWD system. When a train approaches, a guard releases the AWD switch. This sets off a siren and stops all breakers connected to the system.

Low emissions

The Cobra TT meets tough emission requirements, and has been EPA 1-approved.



Low noise

An effective silencer ensures that the Cobra TT meets the current European Noise Emission Directive (NED).

Vibro-reduction

The patented vibration-dampening system features leaf springs rather than rubber bushings or spiral springs.



Model	Tool shank		Part number
	mm	in	
Cobra TT	32x160	1 1/4" x 6 1/4"	8318 0700 09
Cobra TT	32x152	1 1/4" x 6"	8318 0700 11
Cobra TT	28x160	1 1/8" x 6 1/4"	8318 0700 13
Cobra TT	28x152	1 1/8" x 6"	8318 0700 15
Cobra TT - AWD	32x160	1 1/4" x 6 1/4"	8318 0700 17

Technical data

Weight		Length		Depth		Width over handles		Sound level	Vibration level
kg	lb	mm	in	mm	in	mm	in	(Acc. to ISO 3744)	(Acc. to ISO 8662)
25	55	927	36.48	331	13.02	611	24.04	109 dB	2.3 m/s ²

Capacity

Impact energy	Impact rate
Joule	bpm
40 (at 1,620 bpm)	720-1,620

Engine

Type	Power	Cooling system	Starter system	Recommended fuel	Oil type	Oil mix	Fuel capacity	Fuel consumption
90 cc single cylinder two-stroke	1.2 kW (at 6.500 rpm)	Fan cooled	Recoil starter	Petrol, 90-100 octane leaded or unleaded	Atlas Copco two-stroke oil or similar	2 % (1:50)	1.0 l (0.26 US gallon)	1.3 l/hour (0.34 US gallon/hour)

A tool for every job

At Atlas Copco, we maintain a comprehensive range of chisels so that you can select the right tool for the job.

Atlas Copco chisels are probably the hardest wearing on the market. A controlled heat treatment process imparts both strength and high wear resis-

tance to deep surface layers whilst maintaining a tough shock resistant central core to resist breakage.

The striking face is end-milled. This results in better contact between the piston and the tool, improved transfer of energy, as well as less vibration and wear on both hammer and chisel.

Tools

	Description	Tip width		Working length		Weight		Part number
		mm	(in.)	mm	(in.)	kg	(lb)	
	Shank H 32x160 mm (H 1 1/4 x 6 1/4 in)							
1	Moil point			380	15	3.5	7.7	3083 3205 00
	Moil point			450	18	4.0	8.8	3083 3206 00
	Moil point			1000	39	8.2	18.0	3083 3207 00
2	Narrow chisel	35	1 3/8	380	15	3.5	7.7	3083 3208 00
	Narrow chisel	35	1 3/8	450	18	4.0	8.8	3083 3209 00
	Narrow chisel	35	1 3/8	1000	39	8.2	18.0	3083 3210 00
3	Wide chisel	75	3	380	15	4.0	8.8	3083 3211 00
4	Asphalt cutter	115	4 1/2	300	12	3.8	8.4	3083 3212 00
5	Digging chisel	75	3	380	15	4.2	9.2	3083 3213 00
6	Digging spade	125	5	380	15	5.3	11.7	3083 3214 00
7	Clay spade	140	5 1/2	380	15	5.4	11.9	3083 3215 00
8	Wedge chisel	40	1 1/2	400	16	5.5	12.1	3083 3216 00
9	Tie tamper	100	4	400	16	4.5	9.9	3083 3217 00
	Tie tamper	100	4	580	23	5.0	11.0	3083 3217 10
10	Shaft for tamping pad			235	9 1/4	3.6	7.9	3083 3218 01
11	Tamping pad, round	180	7			7.5	16.5	3083 3301 00
12	Tamping pad, square	150	6			8.3	18.3	3083 3302 00
13	Tamping pad, square	200	8			10.3	22.7	3083 3197 00

Use only authorized parts. Any damage or malfunction caused by the use of unauthorized parts is not covered by Warranty or Product Liability.

Accessories

Description	Size	Part number
14 Fuel can	5.0 litre	9234 0008 97
15 Gloves, gel-filled, general	XL	9800 0070 01
	XXL	9800 0098 01
Gloves, gel-filled, summer	L	9800 0434 01
	XL	9800 0435 01
Gloves, gel-filled, winter	L	9800 0290 01
	XL	9800 0291 01
16 2-stroke oil	1.0 litre / 0.26 gallon	9238 2743 50
17 Trolley		9234 0006 54
18 Transport box		9234 0009 91



14. Fuel can



15. Gloves



16. 2-stroke oil



17. Trolley



18. Transport box



1. Moil point



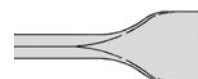
8. Wedge chisel



2. Narrow chisel



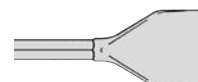
9. Tie tamper



3. Wide chisel



10. Shaft for tamping pad



4. Asphalt cutter



11. Tamping pad, round



5. Digging chisel



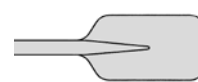
12. Tamping pad, square



6. Digging spade



13. Tamping pad, square



7. Clay spade